

Emily Stewart (USA)

Originally from Central New York, Emily moved to South Dakota in 2018 to pursue a career in Diesel Technology where she found her passion for metal and welding.

Emily's passion for welding and metal art has allowed her the opportunity to teach women how to weld at different events around the country. Every year in November, Emily travels to Lucky Star Art Camp in Hunt, Texas, to teach the women who join for camp how to weld. Each student has the chance to make a metal rose in her 'Intro to Welding' class, and design and create their own sculpture in her 'Welding Sculpture' class. Her art has been on display in a few art shows over the past few years.

As a woman who worked in the male dominated industry of diesel technology, Emily is a proud advocate of women in male dominated industries. She aims to empower women to follow their dreams and support them to do whatever inspires them.

Contact info

Email: Stewartemily093@gmail.com

Instagram: [@emilydury](https://www.instagram.com/emilydury)

Facebook: [@emilydury](https://www.facebook.com/emilydury)

Exhibit "Forged in Silence: Wings of Change"

This piece is dedicated to the lives lost to battles with mental health. The left side represents what others see when someone is struggling with a mental health issue, whole, beautiful, together.

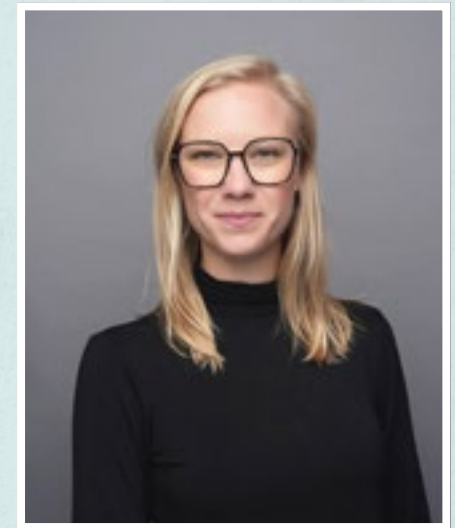
While the right side represents the chaotic, shattered, dark insides of someone struggling with this disease.

This piece is a reminder that many among us battle their demons in silence, and we never know what someone is going through on the inside. The right side is hand bent ½" rolled steel, heated with acetylene torches and bent to the predesigned

shape of the full butterfly wing. The inner part of the wing is made from 5/16" rolled steel, and using the same method as the outer shape of the wing, the inner wing was built. Hand plasma cut 16g sheet metal is welded into some of the full wing. Using heat, these pieces are coloured to give the metal a rainbow look. The left side is made up of hand plasma cut butterflies. Made of 16g steel, three different sizes of butterflies were cut and sporadically placed to make a similar shape as the whole butterfly wing. These butterflies were welded together and attached to round stock to keep the shape and give the wing more structure. The wing was painted teal to represent suicide awareness. Black paint was sprayed on top of the teal and tissue paper was used to give texture and remove some of the black paint giving the butterflies a mixture of teal and black.

Dimensions of Exhibit

Each side, 6ft high and 3ft wide





Forged in Silence: Wings of Change

Emily Stewart

Photos: Ashley Fickbohm, Southern Meadows Photography